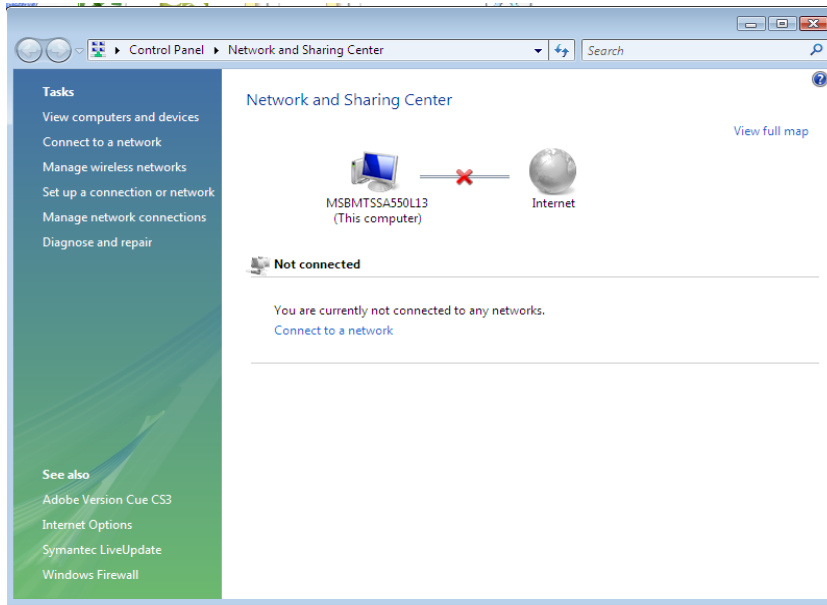
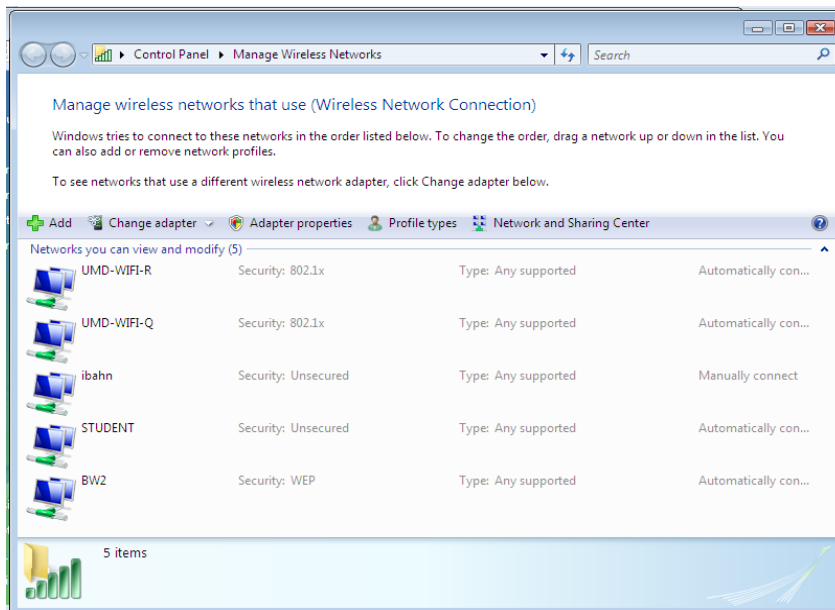


UMDNJ Wireless Documentation for Microsoft Vista

1. Open **Control Panel**, by Clicking Start, Settings, **Control Panel**.
2. Select Classic View.
3. Double Click on Network and Sharing Center.

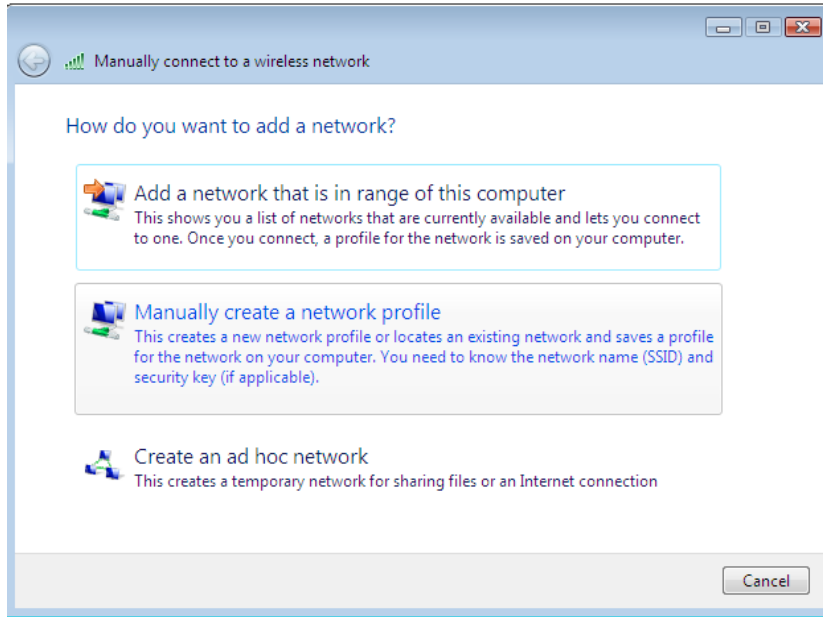


4. Select, **Manage Wireless Networks**.

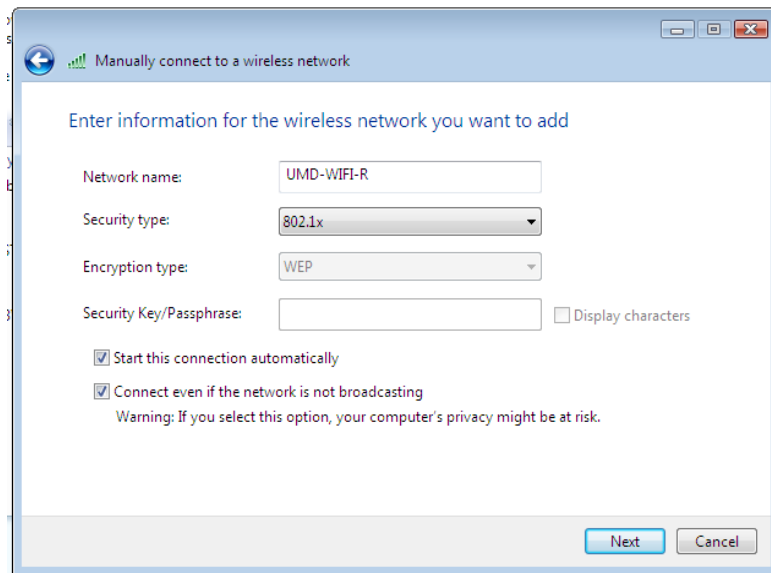


5. Click Add.

UMDNJ Wireless Documentation for Microsoft Vista

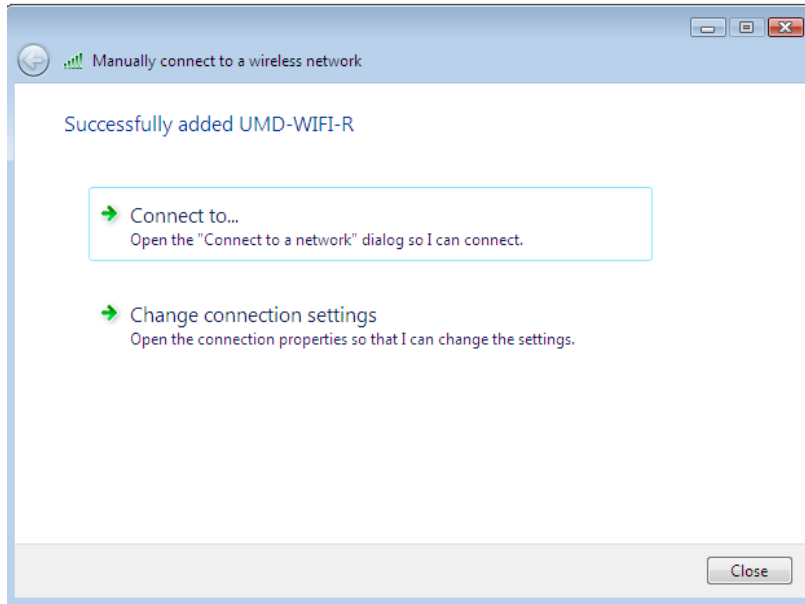


6. Select Manually Create a Network Profile.

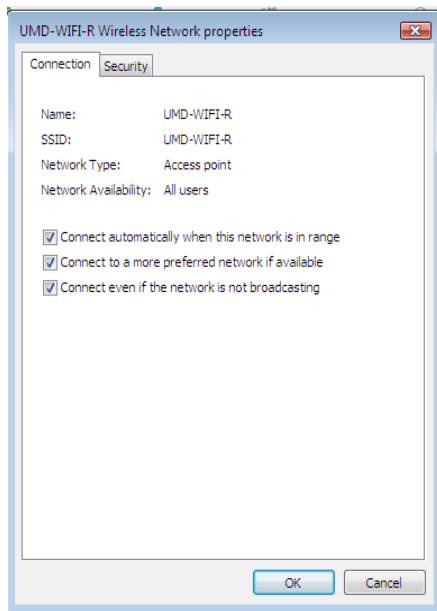


7. Enter (UMD-WIFI-R) as the network name.
8. Select 802.X as the Security Type.
9. Verify settings as per above diagram, **Click Next**

UMDNJ Wireless Documentation for Microsoft Vista

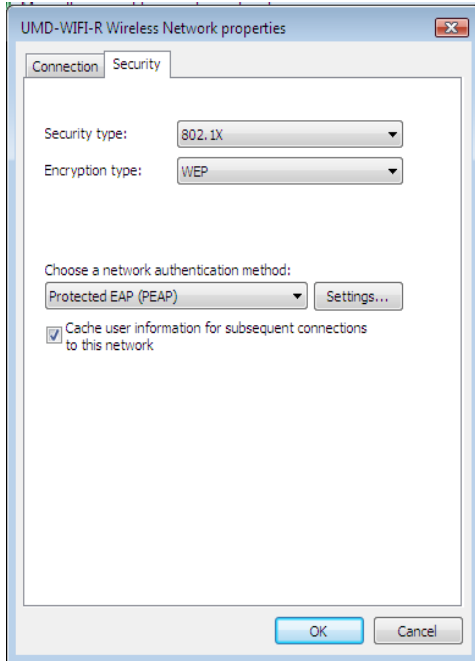


10. Select Change Network Setting.

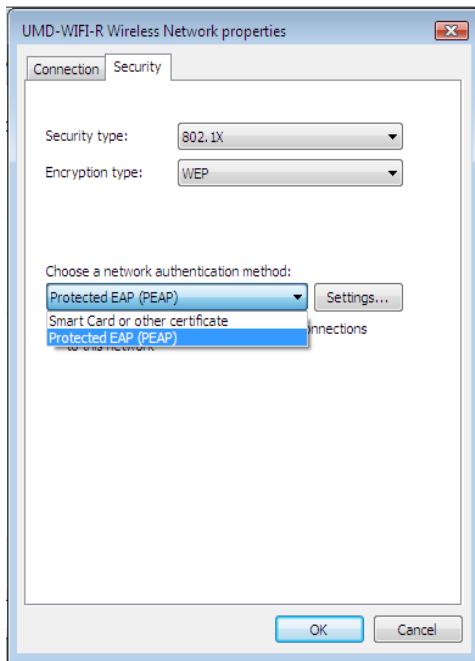


11. Verify the settings above, and select The **Security Tab**.

UMDNJ Wireless Documentation for Microsoft Vista



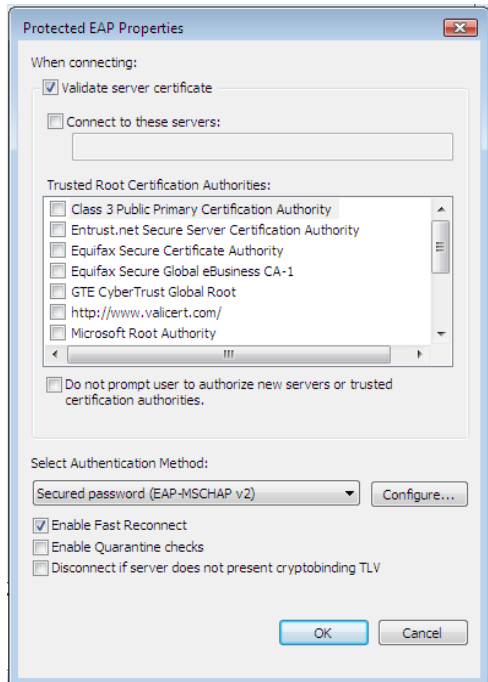
12. Ensure Security Type is 802.x and Encryption is WEP (Cache user Info is Optional)



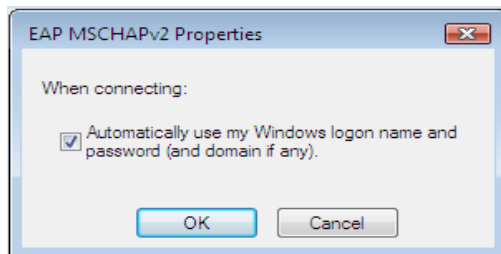
13. Click the dropdown and select Protected EAP (PEAP) as the Network Authentication Method.

14. Select Settings.

UMDNJ Wireless Documentation for Microsoft Vista



15. Verify settings as per above diagram on the **Protected EAP Properties** Screen, Select **configure**.

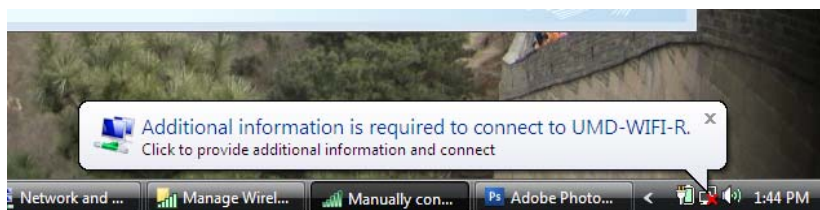


16. Remove the check from **“Automatically Use My Windows Login Name and Password”**.

17. Select OK.

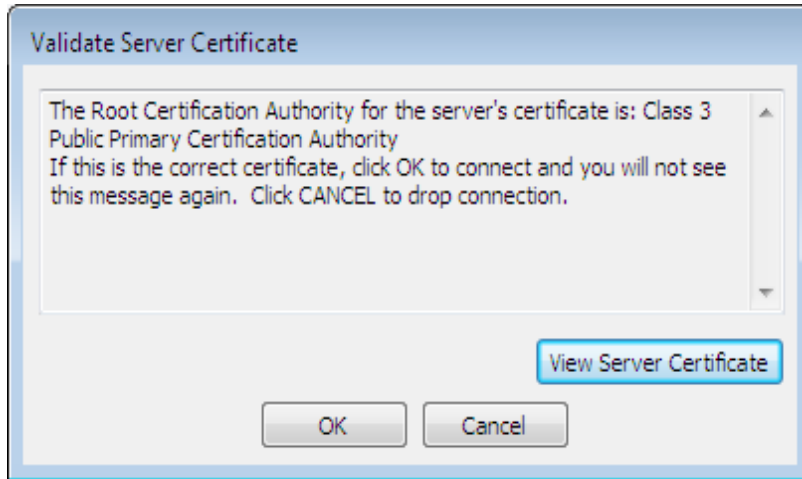
18. Select OK

19. Select Close

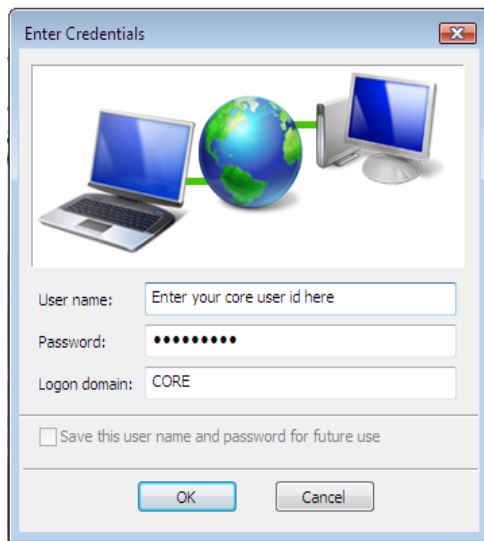


20. Select the **“Additional information is required to connect to UMD-WIFI-R”** Bubble

UMDNJ Wireless Documentation for Microsoft Vista



21. Click OK to validate the Server Certificate



22. Login with your Core user Id and password , using core as the Domain.