

UMDNJ Wireless Documentation Windows 7

The following documentation will provide instructions for configuring the Microsoft Windows 7 native wireless client. There are wireless adapters that have 3rd party wireless client configuration software preinstalled. If the 3rd party wireless client software is primary configuration source then use the information in this document to create a profile. If it's not the primary configuration, then follow the document below to access UMDNJ secure wireless network. Make sure you register for wireless access at <http://istreg.umdj.edu>

Follow the on-screen instructions for registering for wireless access. You will need your UMDNJ account information. Read the wireless communications policy and agree to the terms & conditions.



UMDNJ IST Registration - Windows Internet Explorer

http://istreg.umdj.edu/

File Edit View Favorites Tools Help

UMDNJ IST Registration

RESEARCH. EDUCATION. HEALTHCARE. STATEWIDE.

UMDNJ
UNIVERSITY OF MEDICINE &
DENTISTRY OF NEW JERSEY

SCHOOLS | NEWS/EVENTS | UMDNJ RESOURCES
SEARCH | EMPLOYMENT | FOUNDATION | ALUMNI

Search for: UMDNJ Google

RESEARCH EDUCATION HEALTH CARE ABOUT UMDNJ PRESIDENT'S PAGE

IST REGISTRATION

Welcome to the IST Registration Home Page
for The University of Medicine and Dentistry of New Jersey.

To register for IST services, please select one of the following.

Registering for:

To start the wireless configuration process, close all applications and windows. Click on the windows icon on the bottom left hand screen. (Figure 1)

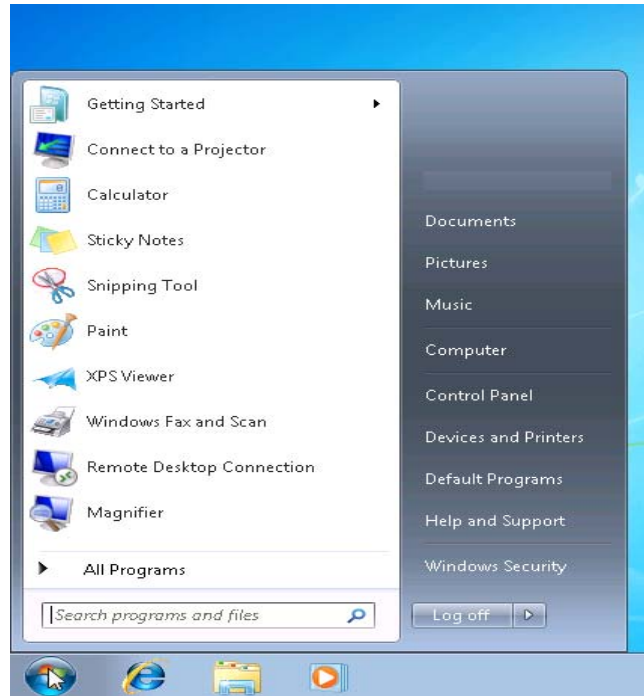


Figure 1

In the “*Search programs and files*” field, Type “**Manage wireless networks**” in the field. Click on “**Manage wireless network**” as shown in Figure 2.

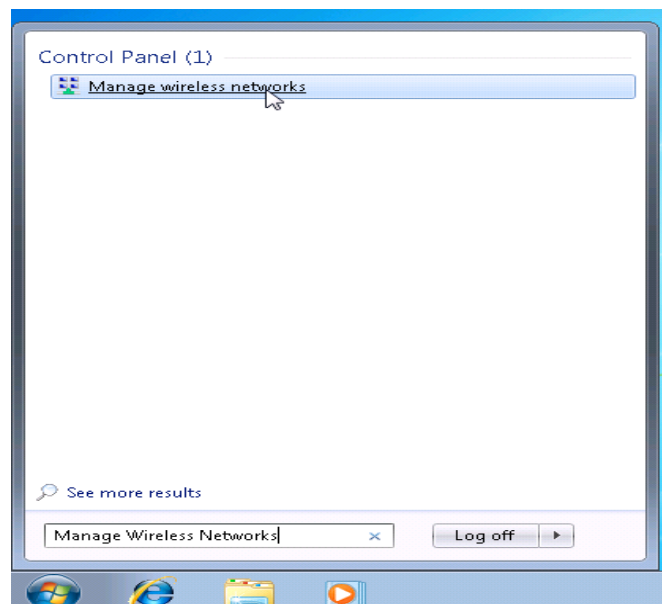


Figure 2

Figure 3 shows the wireless network profiles currently configured. For the document purposes there are no profiles in the picture example. Other profiles may exist for other wireless networks. (Note: If there are any existing UMDNJ profiles delete them before continuing)

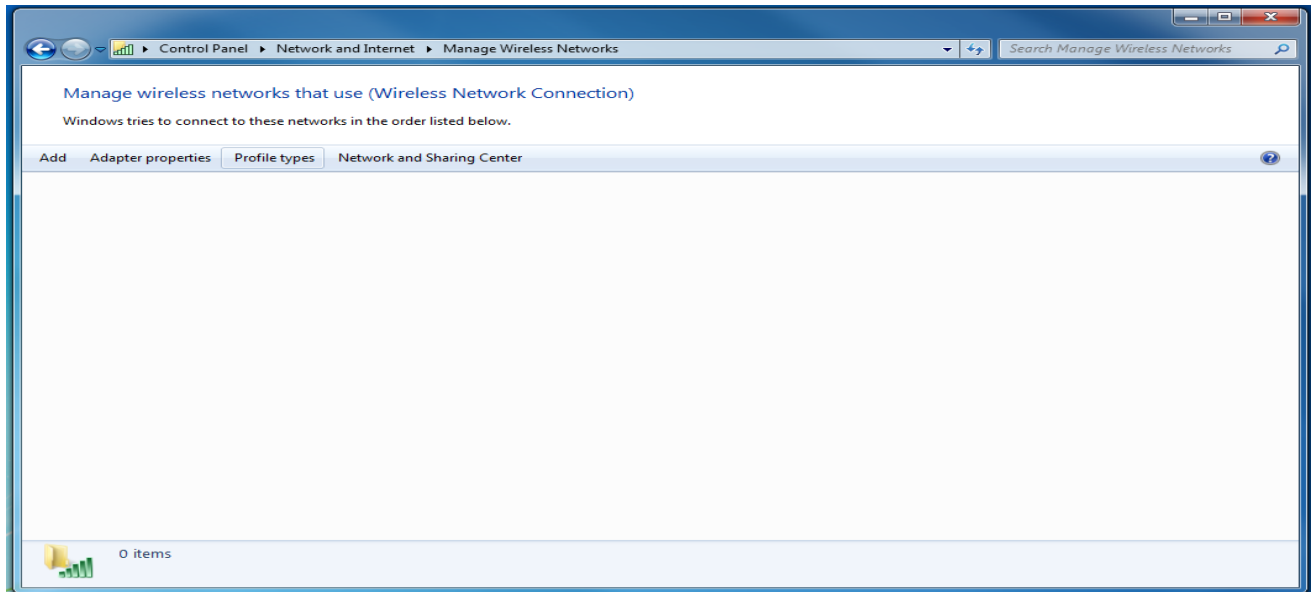


Figure 3

Click **Add** as shown on Figure 3. Click “**Manually create a network profile**” as shown on Figure 4.

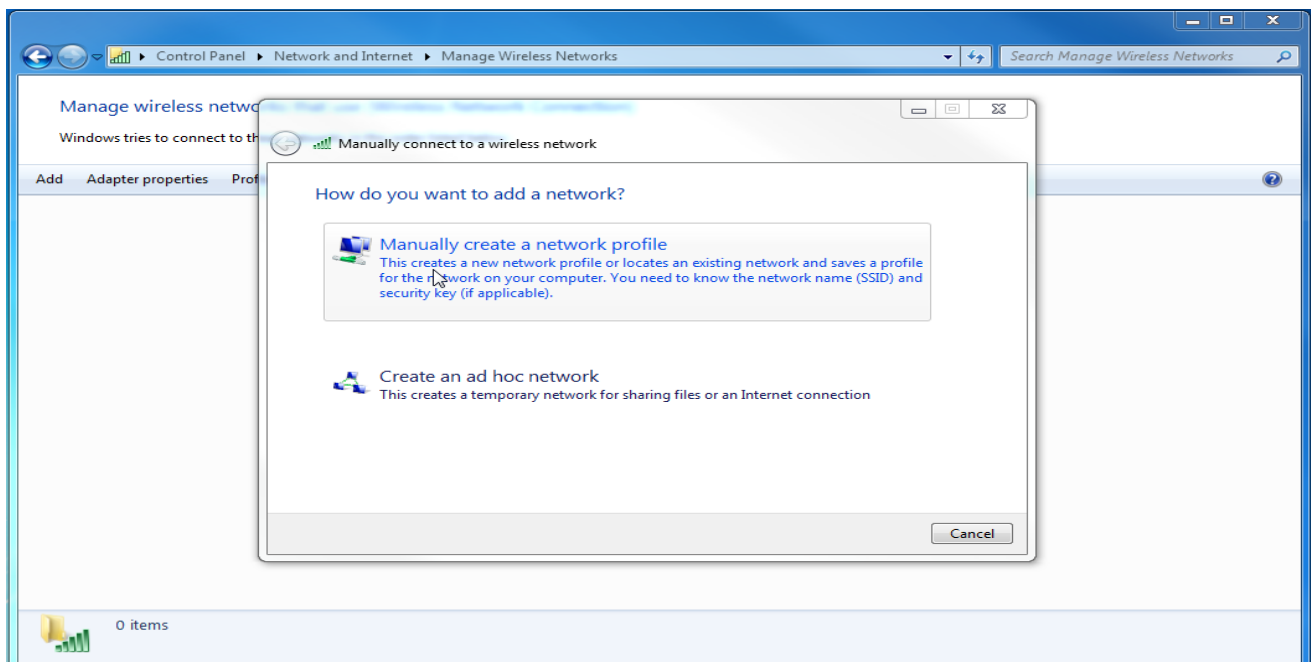


Figure 4

Figures 5 through 11 are screen shots of what settings need to be configured for proper addition of the **UMD-WIFI-R** profile.

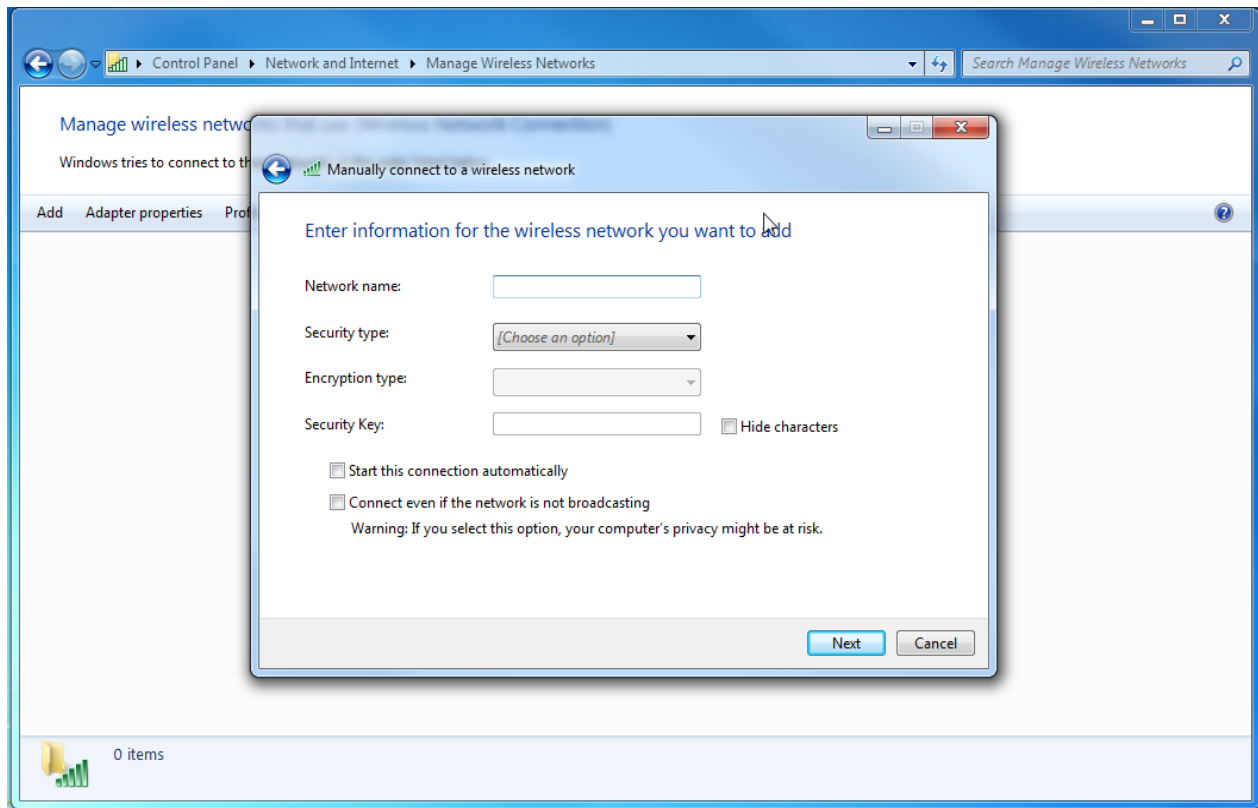


Figure 5

Figure 5 displays the network association information and should be configured with the following setting:

Network Name/SSID: **UMD-WIFI-R** (Note: Must be in CAPS)
Security Type: **WPA-Enterprise**
Encryption Type: **TKIP**

Check the following:

- Start this connection automatically
- Connect even if the network is not broadcasting

Figure 6 displays what the screen should look like when finished. Click Next to proceed.

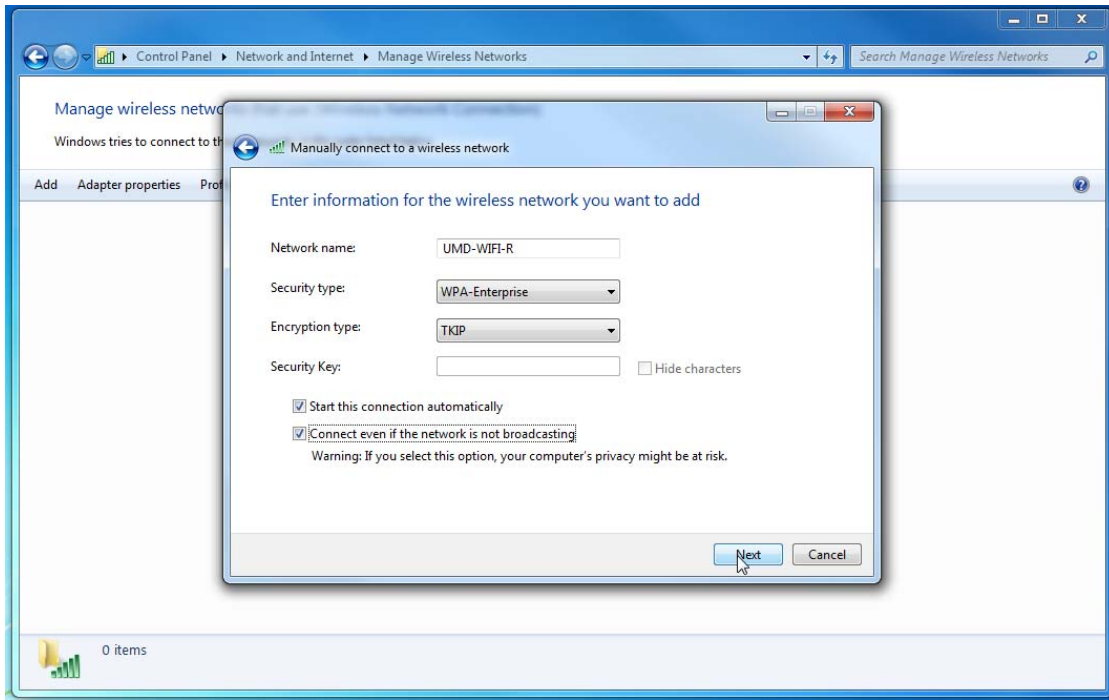


Figure 6

Click "Change connection settings"

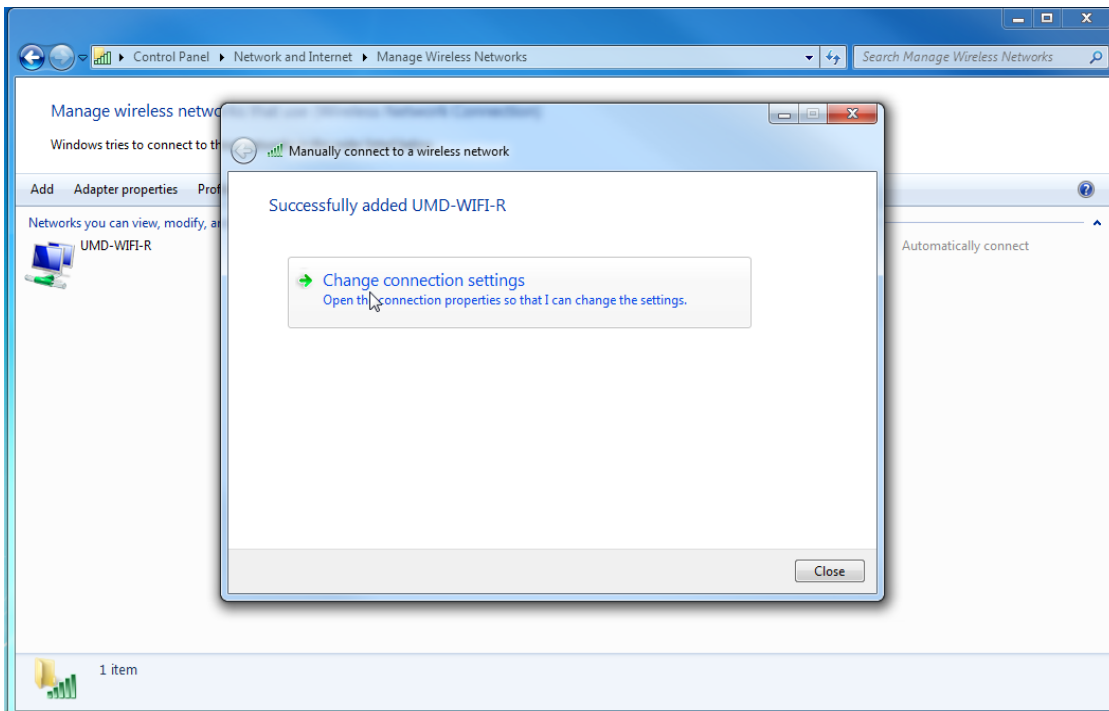


Figure 7

Figure 8 shows Connection properties for **UMD-WIFI-R** profile.

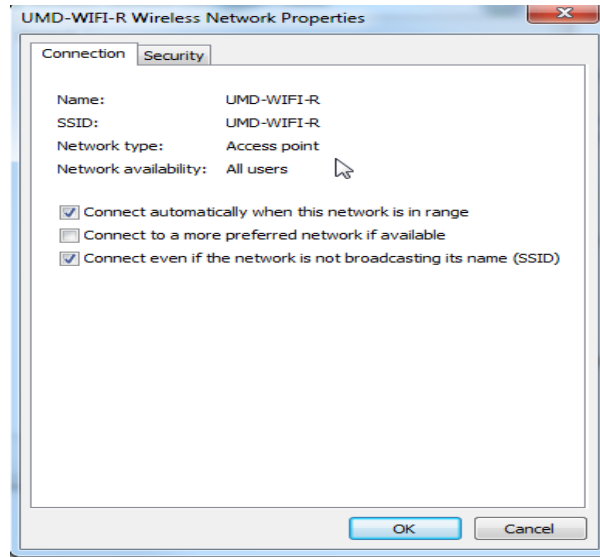


Figure 8

Click **“Security”** tab then Click **“Settings”** tab. (Figure 9)

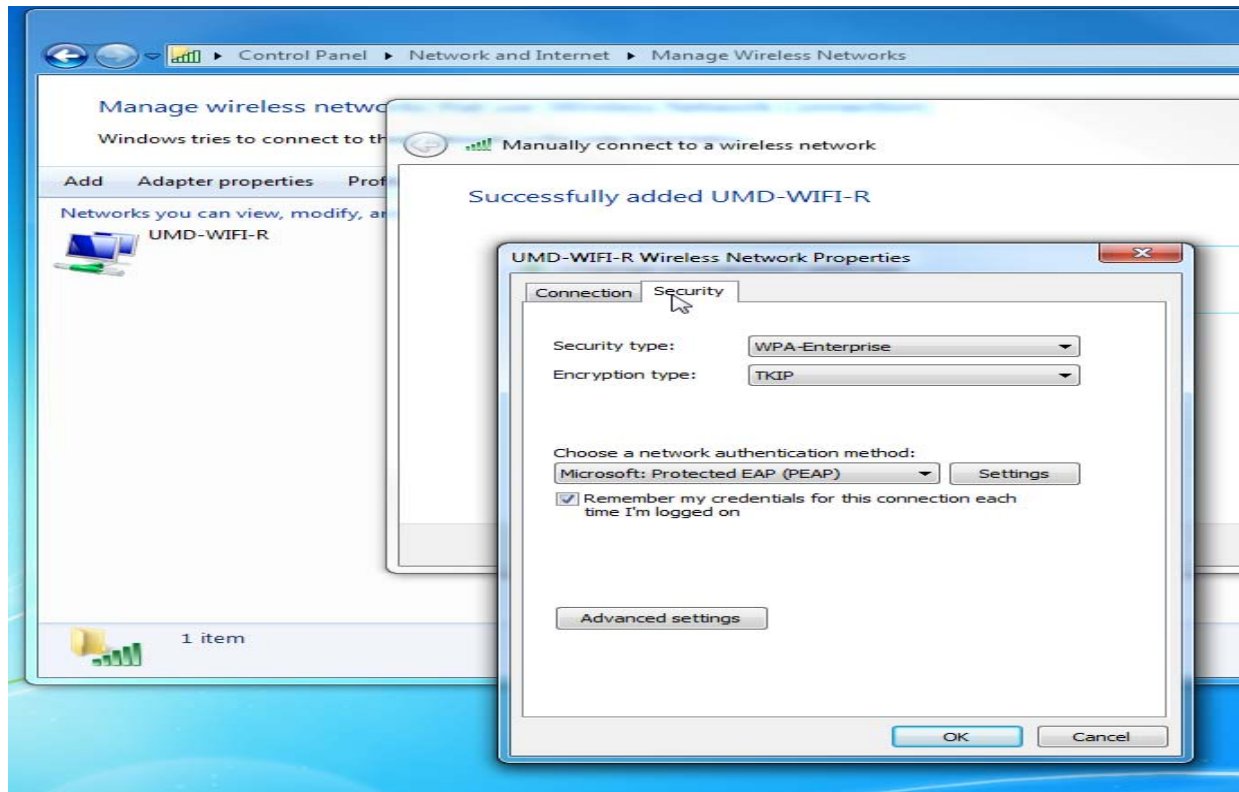


Figure 9

Figure 10 shows the default settings for Protected EAP Properties. Verify these settings are enabled.

Check **“Validate server certificate”**

Select Authentication Method:

Secured password (EAP-MSCHAP v2)

Check **“Enable Fast Reconnect”**

Click **“Configure”** (Figure 10)

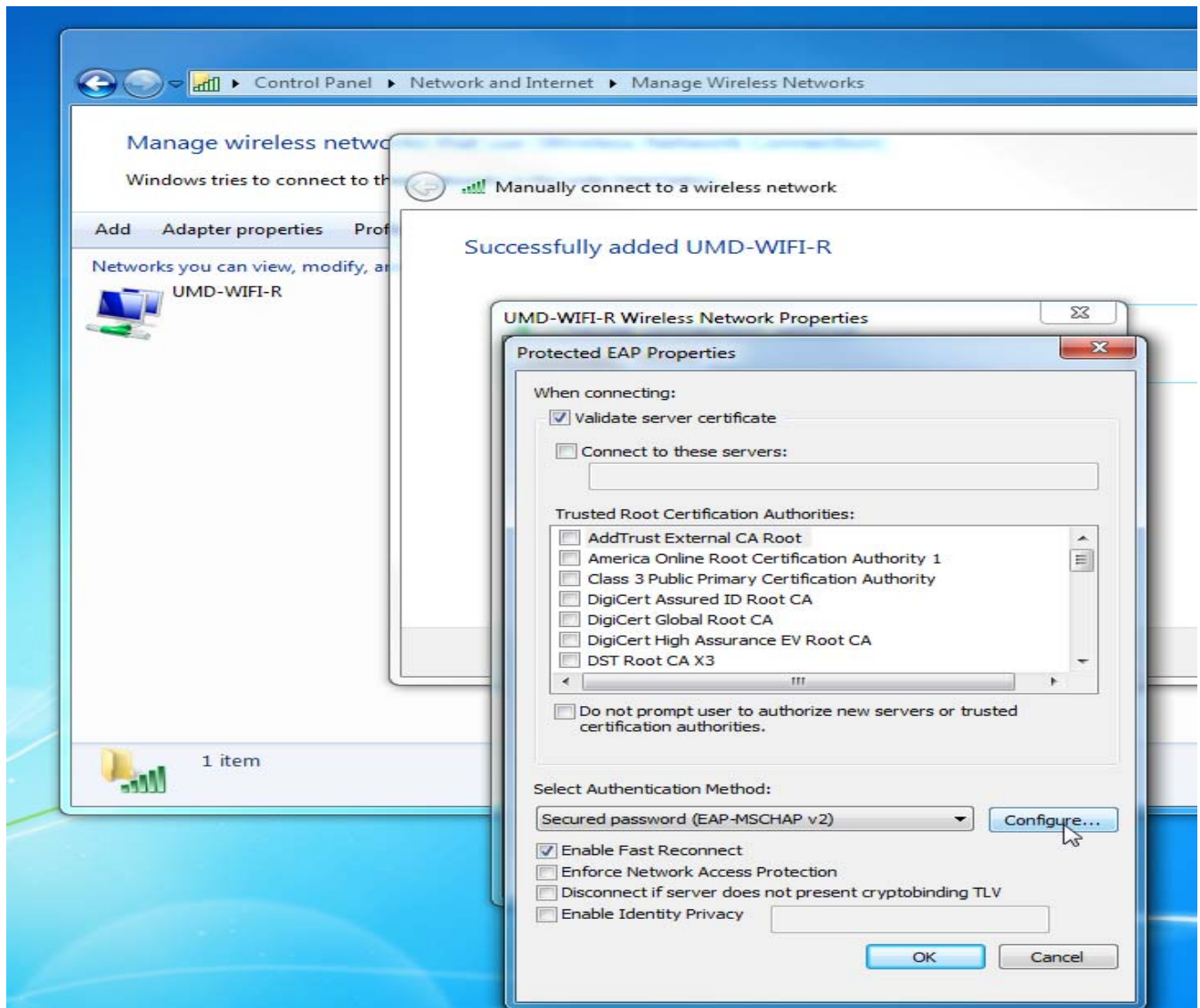


Figure 10

Figure 11 is fairly important for all users. This screen is populated by clicking the Configure button in the Select Authentication Method in Figure 10. The box should not be checked. The reason for this is as follows, if the device is part of a domain or requires the user to supply credentials for access, then the credentials that were provided at time of login would be the same credentials passed along to the network for authentication. Since the credentials would be from their local windows account or their companies domain account, the authentication would fail. Also by not selecting the check box, each time a new connection is established to the UMDNJ wireless network the user would be prompted to enter their UMDNJ Core account credentials.

Click **OK** to continue (Figure 11)

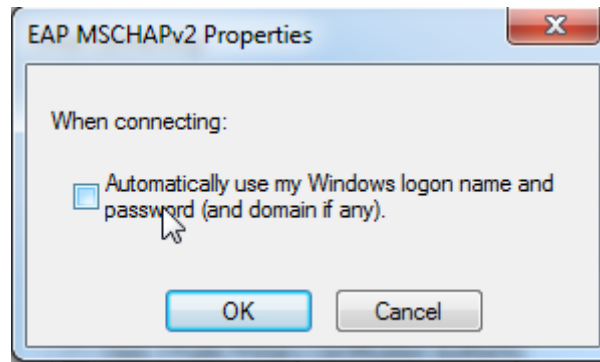


Figure 11

Click **Close** to continue (Figure 12)

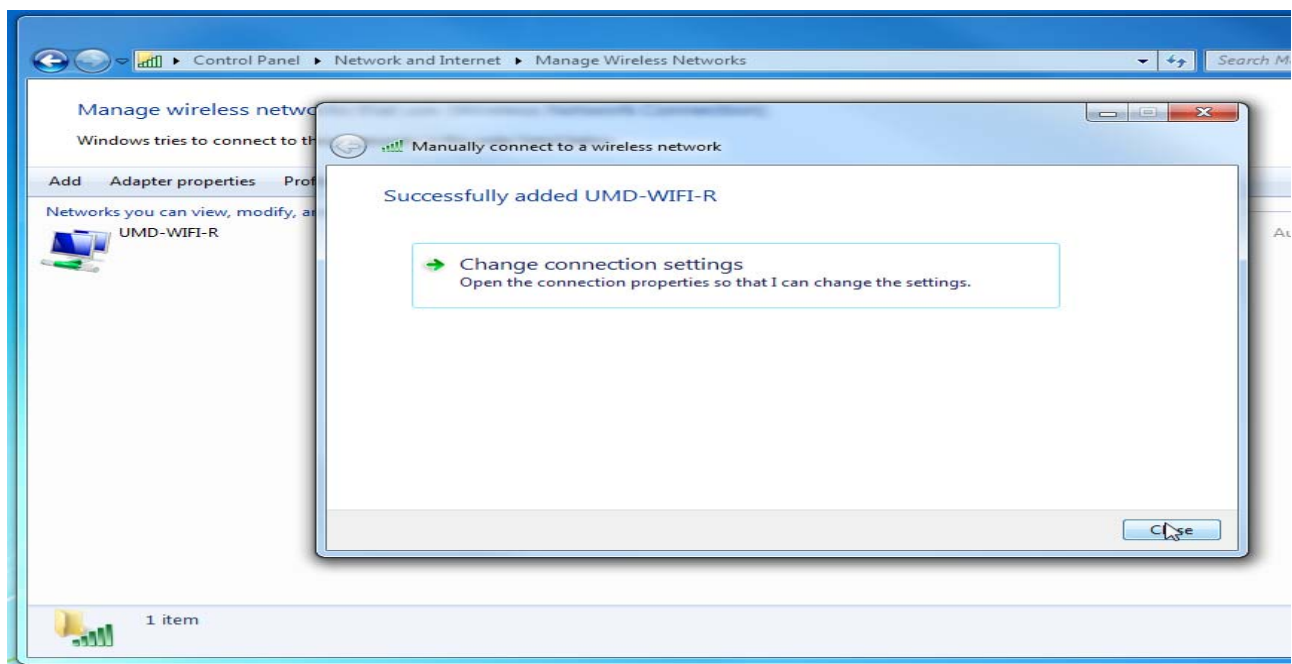


Figure 12

Figure 13 displays the **UMD-WIFI-R** profile has been created and ready to connect. Close the following window by clicking the top right hand X

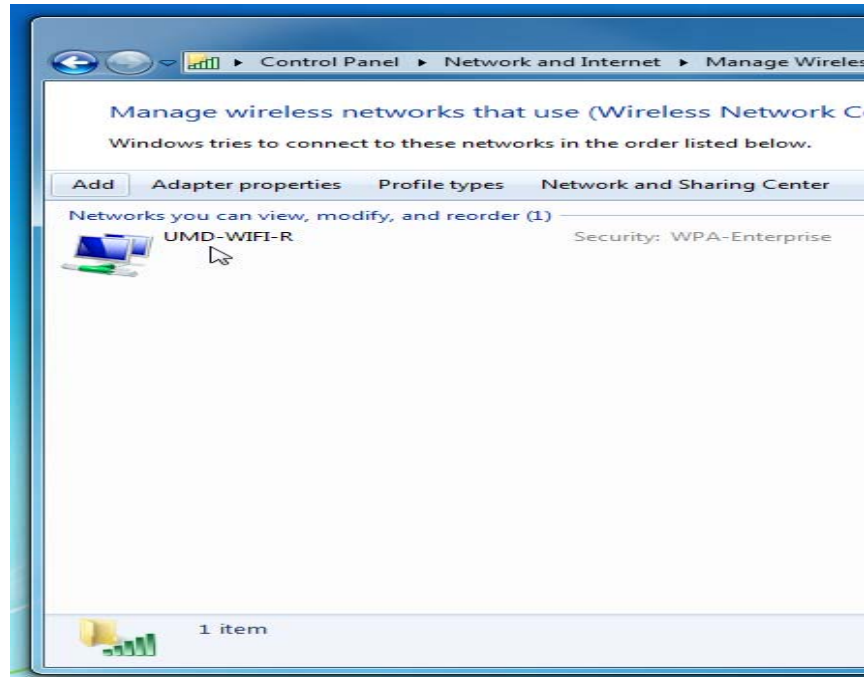



Figure 13

Click on the bottom right hand corner where the wireless symbol  is located. (Figure 14)

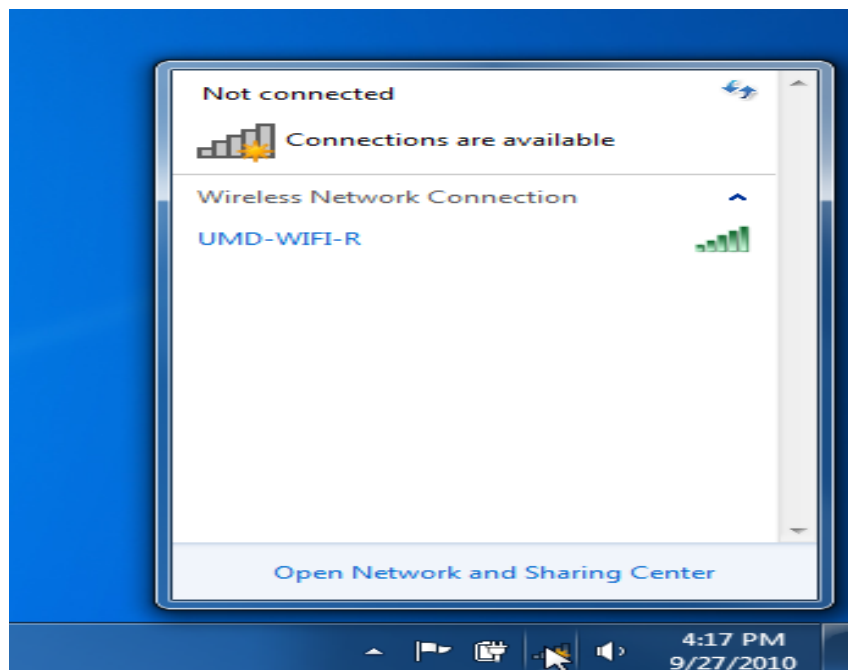


Figure 14

Click **“Connect”** on **UMD-WIFI-R** profile (Figure 15)

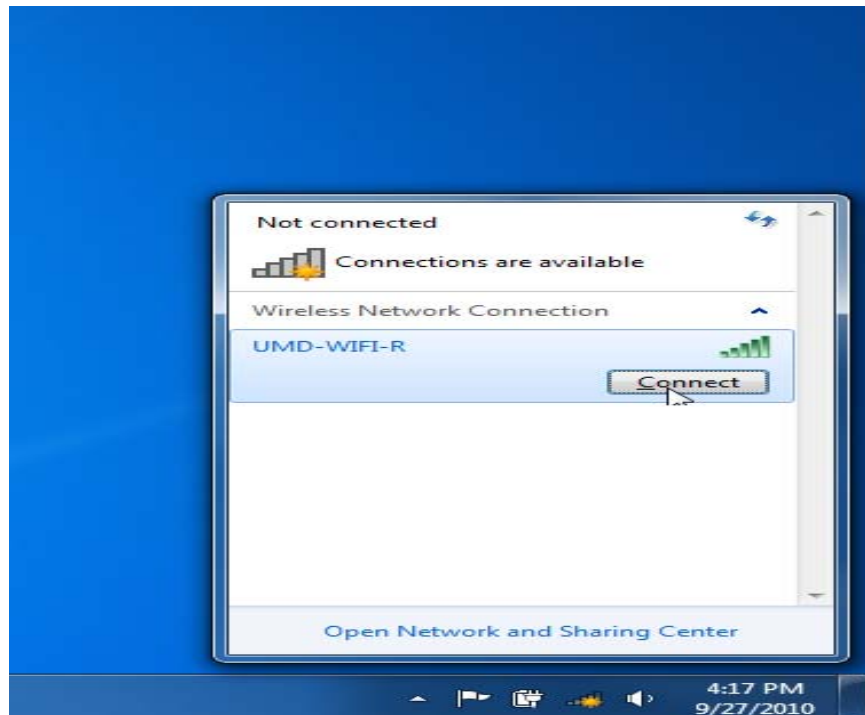


Figure 15

Click on pop-up window **“Additional information is needed to connect to UMD-WIFI-R”** (Figure 16)

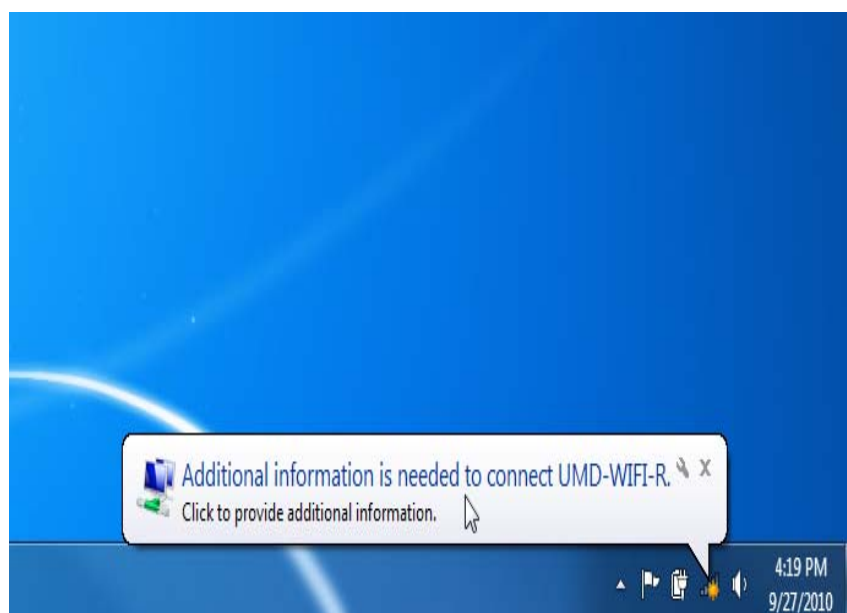


Figure 16

Click “**Enter/select additional logon information**” (Figure 17)

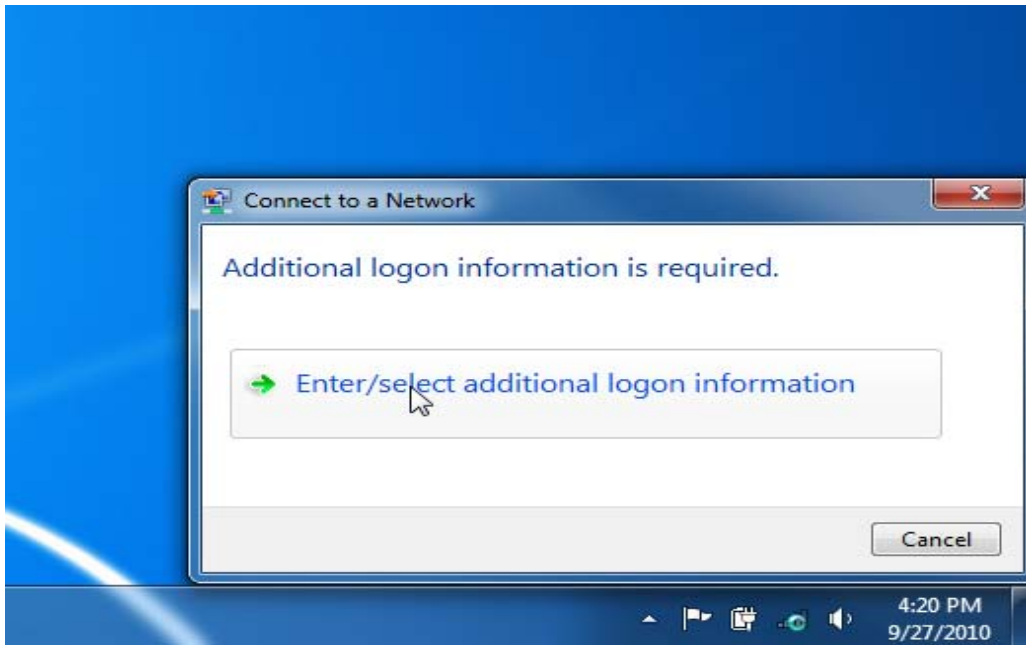


Figure 17

Enter your “**Core**” credentials & Click **OK** when done. (Figure 18)



Figure 18

After entering “Core” credentials in Figure 18 this screen will pop-up (Figure 19). Windows 7 has built-in security to verify you are connecting to the proper wireless connection.

Click “**Connect**” to continue

(Note: The information in figure 19 will show two different “**Radius Servers**” **NWCSTAUTH02.core.umdj.edu** & **STCSTAUTH02.core.umdj.edu** depending on your location. If neither one of these servers are listed click “**Terminate**”).

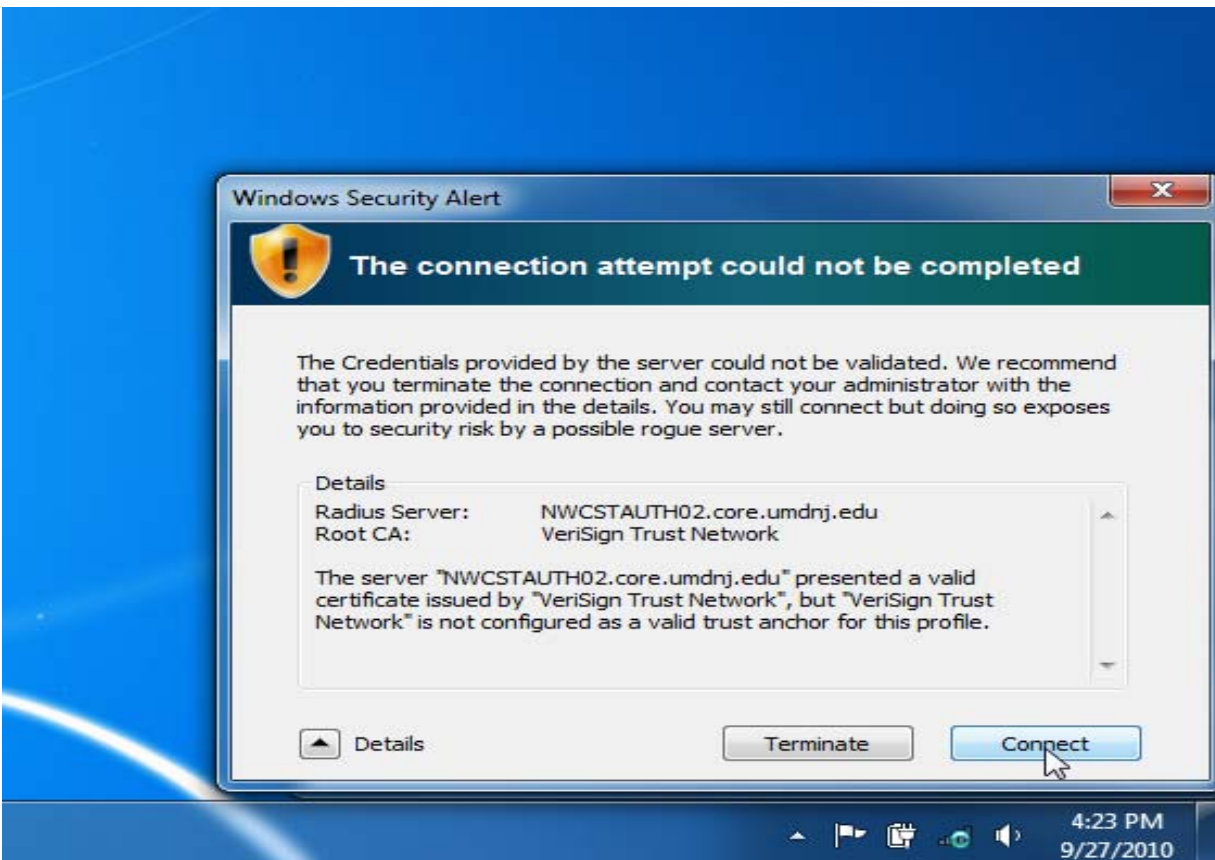


Figure 19

You should be connected to the secure **UMD-WIFI-R** wireless network. If you are unable to connect after following this document either contact your local PC support group or IST Service Center at (732) 743-3200 / 3-3200.